

Aluminum floating docks

# Anchoring Systems

---

For all floating  
dock systems

---









**Our engineers have earned international recognition for their one-of-a-kind expertise in planning full anchoring system layouts. Through an in-depth analysis of all the project parameters, they're able to offer you the perfect solution for your needs.**

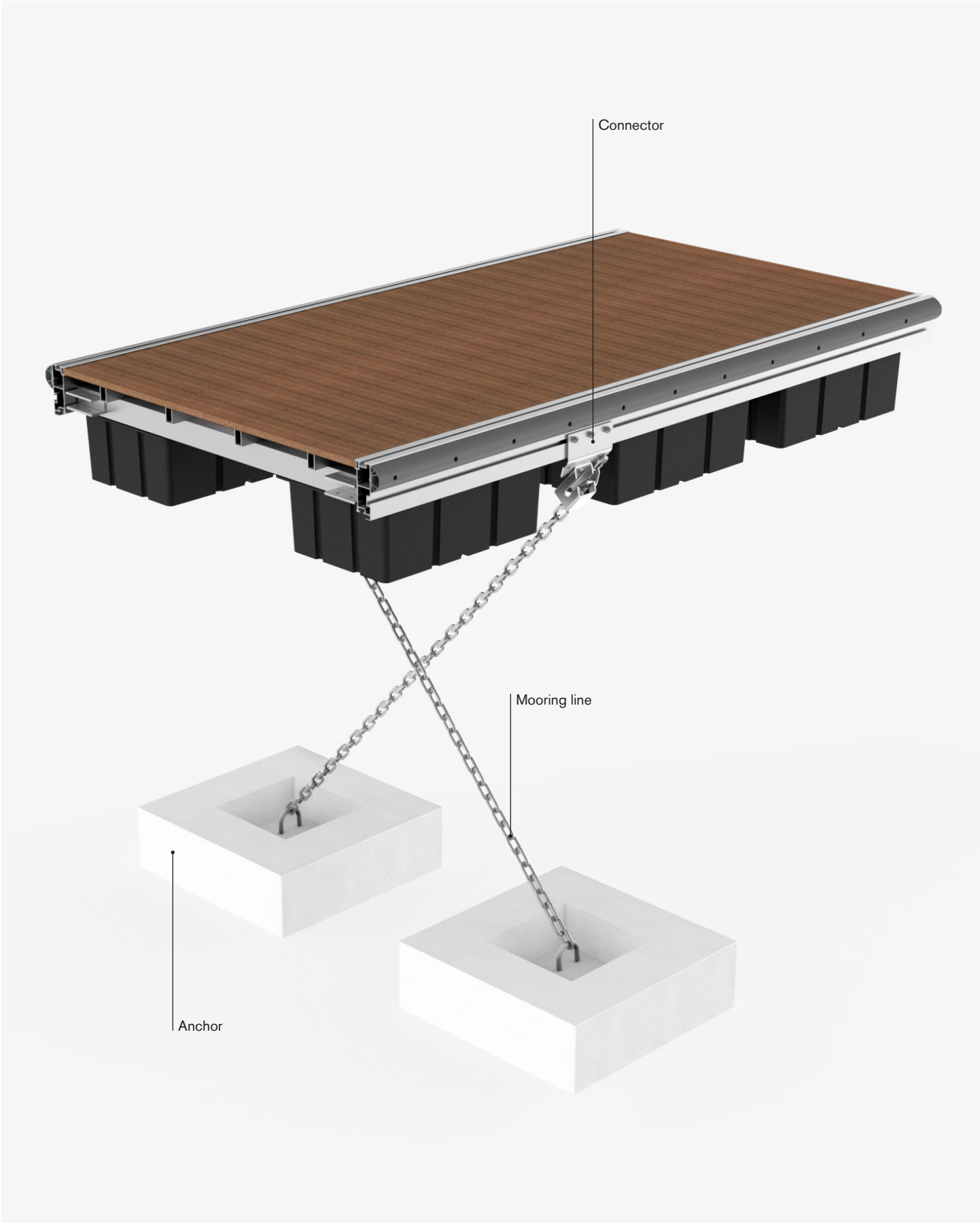
**MAADI Group engineers can recommend the best anchoring system for you in terms of application, safety, and maintenance. All components and hardware are resistant to salt-water corrosion.**





# Anchoring Systems

	Deadman <div>More details</div>			Piles <div>More details</div>	H-beam <div>More details</div>	Push-arm <div>More details</div>
	Concrete block	Helical anchor	Earth anchor			
Tides						
Small	■	■	■	■	■	■
Large	■	■	■	■	■	
Water depth						
Shallow Up to 20' (6.1 m)	■	■	■	■	■	■
Deep Up to 60' (18 m)	■	■	■		■	■
Bottom conditions						
Soft	■		■	■	■	■
Hard	■	■		■	■	■
Setting						
Bulkhead/Seawall					■	■
Shoreline						■



# Deadman

This method of anchoring is the most common and generally used in deep waters.

---

## Specifications

---

### System

- Floating docks are moored to the sea bed with anchors and to the shore with mooring lines
- No adjustment required after installation

---

### Anchor options

- Concrete block
- Helical anchor
- Plow anchor

---

### Mooring options

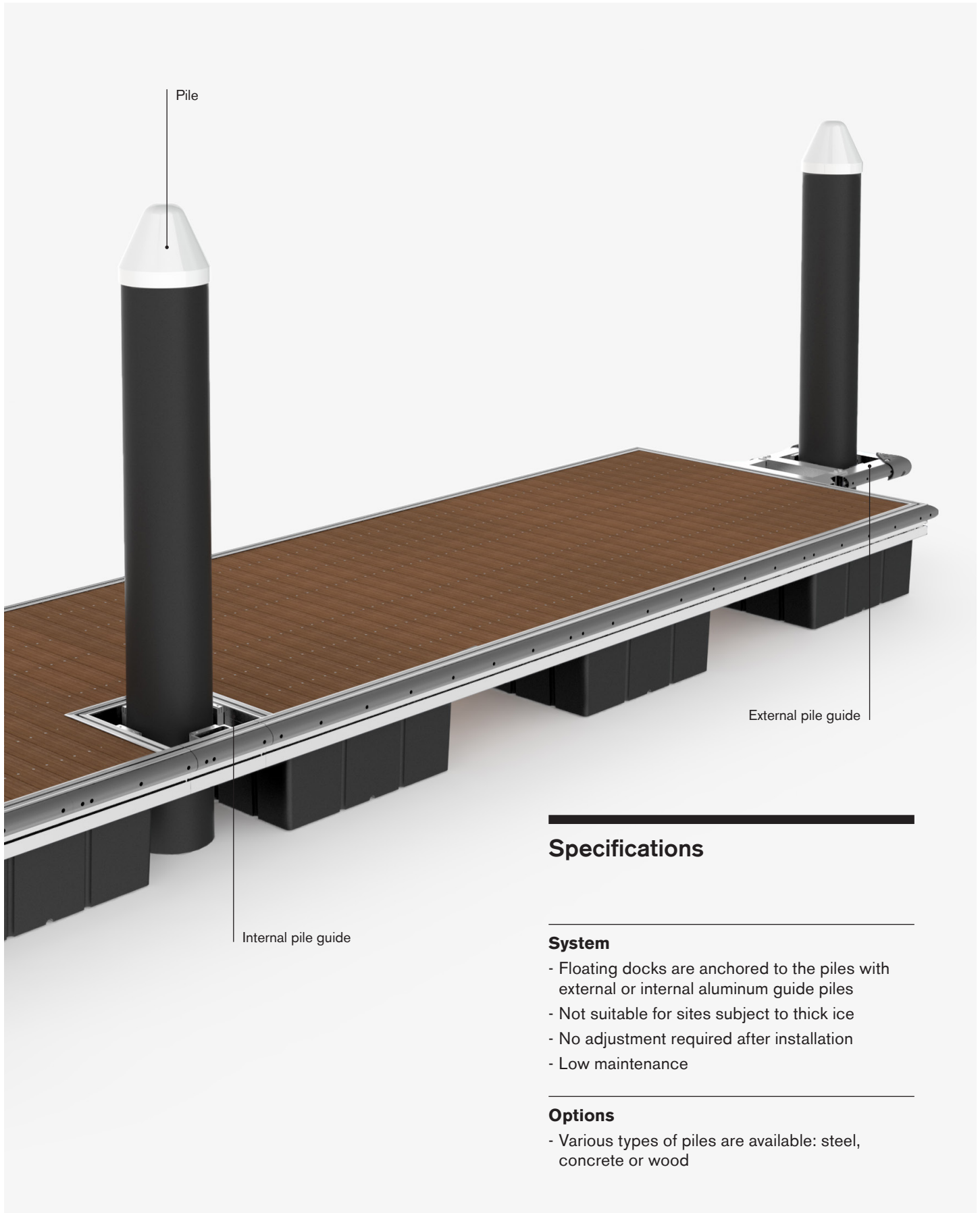
- Hot-dip galvanised chain and shackle
- Cable with rubber hawser

---

## Connector







---

## Specifications

---

### System

- Floating docks are anchored to the piles with external or internal aluminum guide piles
- Not suitable for sites subject to thick ice
- No adjustment required after installation
- Low maintenance

---

### Options

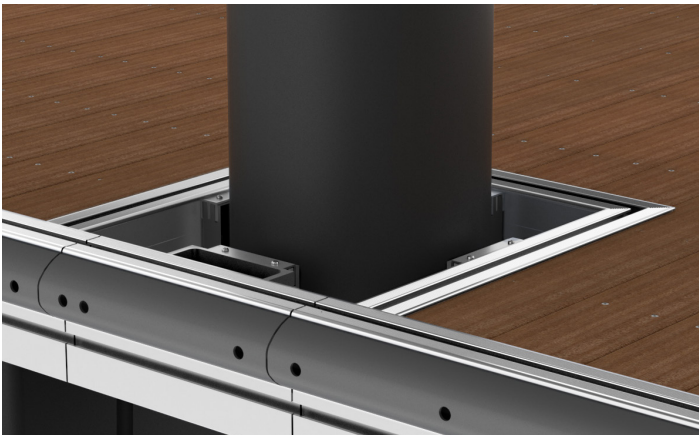
- Various types of piles are available: steel, concrete or wood



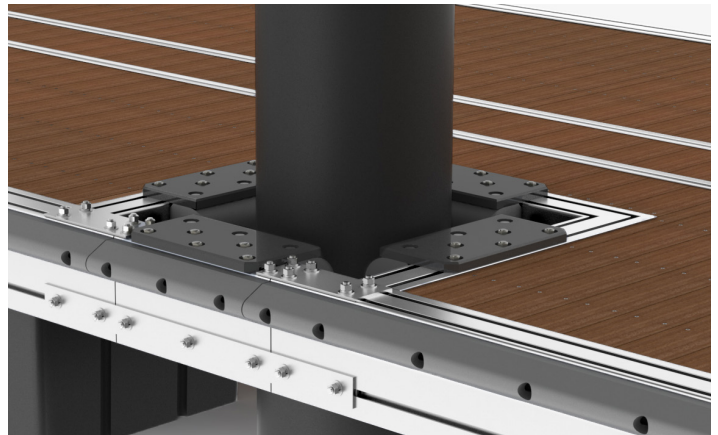
# Piles

Pile anchoring is a long-lasting mooring method and is usually used in shallow waters.

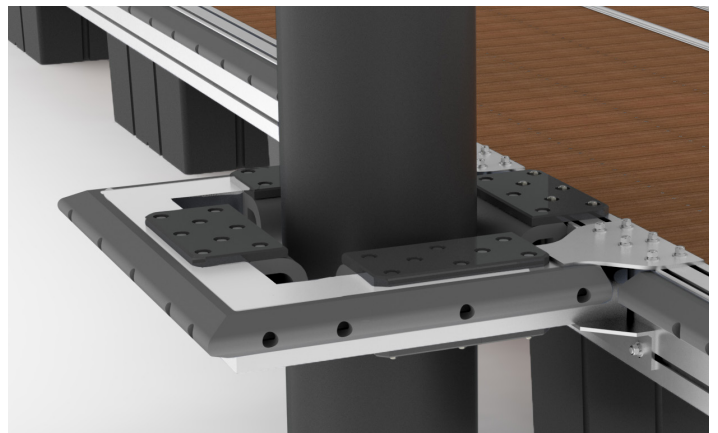
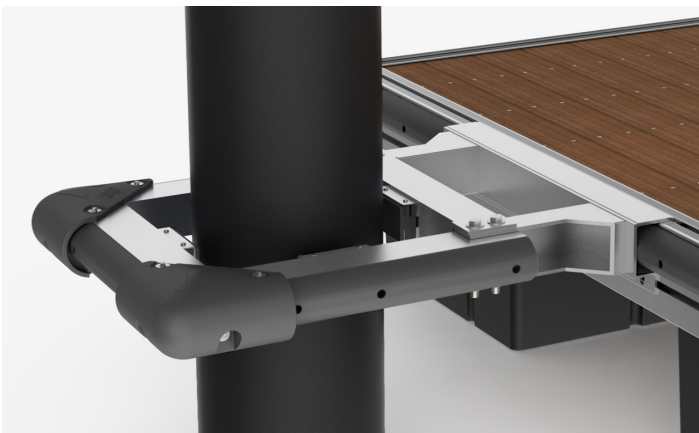
## Great Lakes system



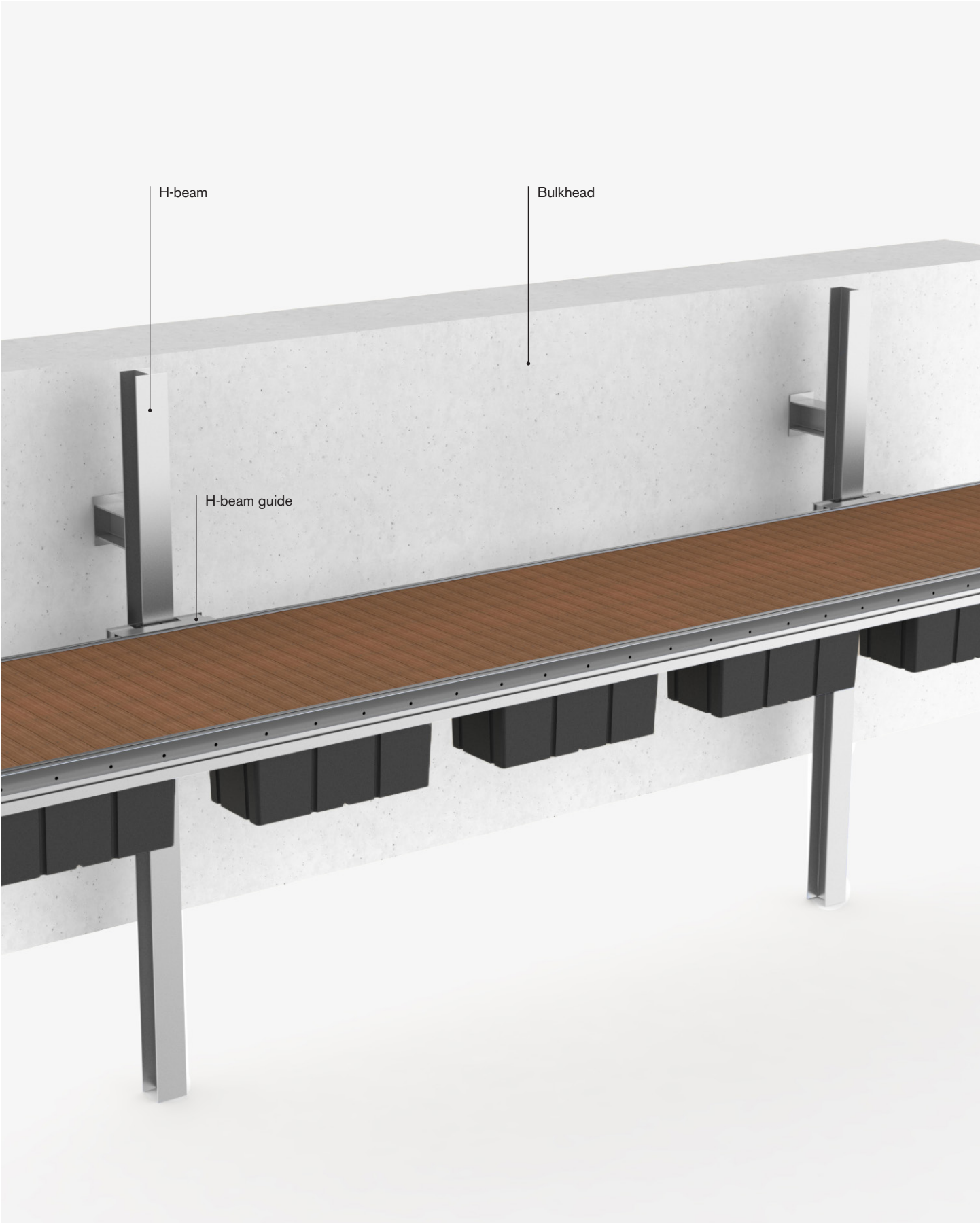
## Tri Ocean system



## Internal



## External



# H-Beam

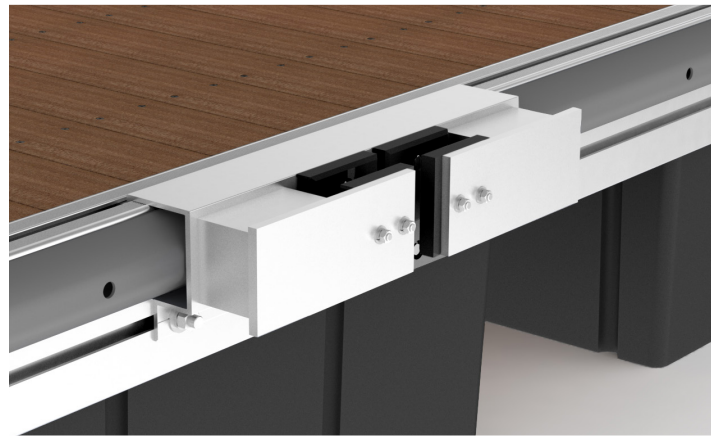
Can be used for floating docks anchored along a seawall or bulkhead.

## Specifications

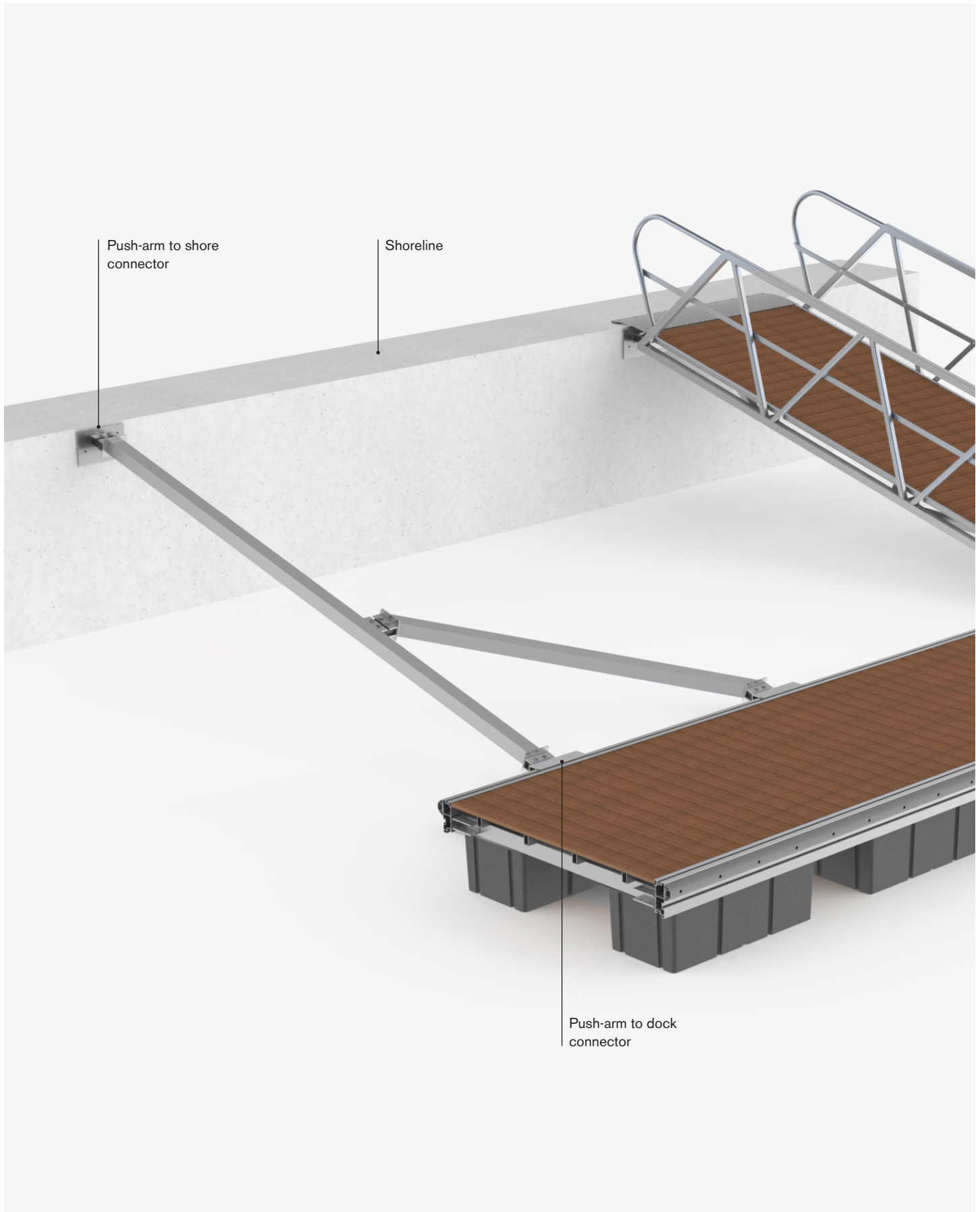
### System

- Economical mooring solution compared to piles
- Ideal when water level variations are large
- Easy to install
- No adjustment required after installation
- Low maintenance

## H-beam guide







# Push-Arm

Used for floating docks along the shoreline, particularly when the shoreline is uneven.

## Specifications

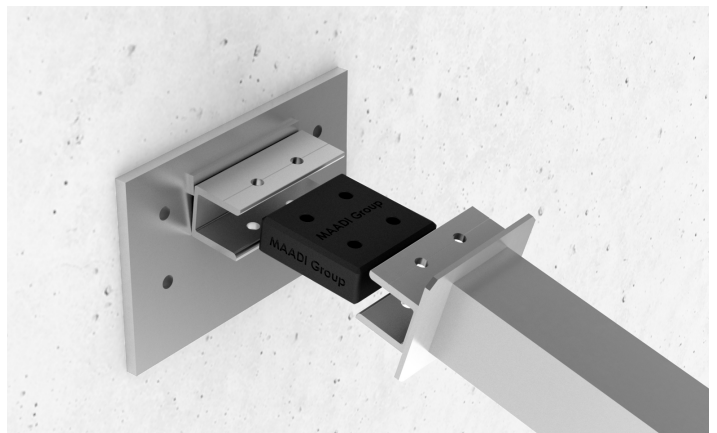
### System

- Push-arm mooring method is used where water level variations are small
- All components and hardware are resistant to corrosion from salt water
- No adjustment required after installation
- Low maintenance

## Connectors



## Dock



## Shore



---

## MAADI Group

3040 Rte Marie-Victorin  
Varennnes, Quebec  
Canada J3X 1P7

---

450.449.0007

---

866.668.2587

---

[maadigroup.com](http://maadigroup.com)

---

[info@maadigroup.com](mailto:info@maadigroup.com)

---

MAADI Group reserves the right to make changes including to specifications, content or descriptions at any time and without notice.

MAADI Group™ is a trademark of MAADI Group

© 2022 MAADI Group. All rights reserved.

